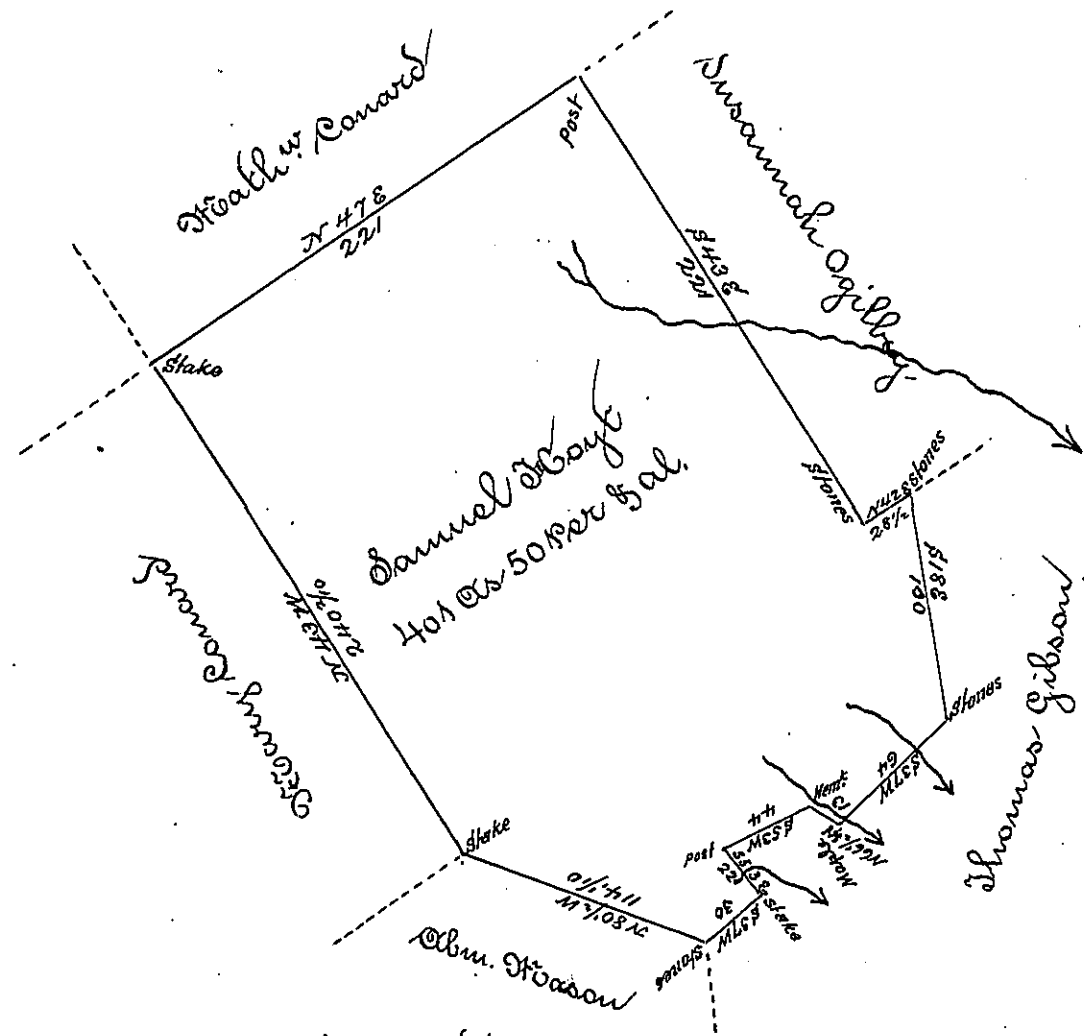


See-162-215



A draught of a tract of ^{unimproved} land situate in Jefferson township Luzerne County adjoining lands surveyed to Susannah Ogilby, Thomas Gibson, Abraham Hoason, and others, containing four hundred and one acres, and fifty perches and allowance of six per cent for roads &c. - surveyed to Daniel Hoyt February 15th 1848 in pursuance of a warrant dated 2nd of February 1848

To John Raporte }
 Sur Genl }

Benny Colt
 19.5

IN TESTIMONY that the above is a copy of the original remaining on file in the Department of Internal Affairs of Pennsylvania, made conformably to an Act of Assembly approved the 16th day of February, 1833, I have hereunto set my Hand and caused the Seal of said Department to be affixed at Harrisburg, this Sixth day of August 1896.

James W. Patton
 Secretary of Internal Affairs.